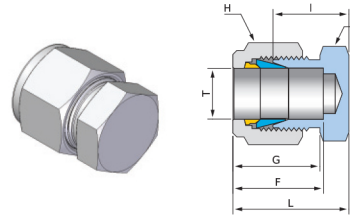


Tube Cap  
**UC**



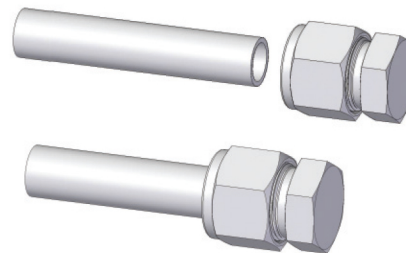
Connects Fractional Tube

Part No.	Tube OD		Dimensions (mm)							
	T		h		H		F	G	I	L
	inch	mm	inch	mm	inch	mm				
UC-02	1/8	3.17	7/16	11.11	7/16	11.11	12.8	15.4	13.5	20.3
UC-03	3/16	4.76	7/16	11.11	1/2	12.70	14.0	16.4	14.7	21.6
UC-04	1/4	6.35	1/2	12.70	9/16	14.28	15.1	17.4	16.0	23.2
UC-05	5/16	7.93	9/16	14.28	5/8	15.87	16.6	18.8	17.0	24.7
UC-06	3/8	9.52	5/8	15.87	11/16	17.46	16.7	18.9	18.3	25.6
UC-08	1/2	12.70	13/16	20.63	7/8	22.22	22.7	21.6	19.1	29.1
UC-10	5/8	15.87	15/16	23.81	1	25.40	24.5	22.0	19.8	30.0
UC-12	3/4	19.05	1-1/16	26.98	1-1/8	28.57	24.4	21.9	21.3	31.4
UC-14	7/8	22.22	1-3/16	30.16	1-1/4	31.75	26.0	22.0	23.9	34.1
UC-16	1	25.40	1-3/8	34.92	1-1/2	38.10	31.1	26.1	26.2	38.3
UC-20	1-1/4	31.75	1-3/4	44.45	1-7/8	47.62	41	39	31.2	53.0
UC-24	1-1/2	38.10	2-1/8	53.97	2-1/4	57.15	50.1	45.3	37.3	64.6
UC-32	2	50.80	2-3/4	69.85	3	76.20	69.1	63.5	49.3	87.4

Connects Metric Tube

Part No.	Tube OD		Dimensions (mm)				
	T	h	H	F	G	I	L
	mm	mm	mm				
UC-M03	3	11.11	11.11	12.7	15.3	13.5	20.2
UC-M04	4	11.11	12.70	13.7	16.1	14.7	21.2
UC-M06	6	14.28	14.28	15.3	17.6	15.7	23.1
UC-M08	8	15.87	15.87	16.3	18.7	17.0	24.6
UC-M10	10	17.46	19.05	17.3	19.5	19.0	26.7
UC-M12	12	22.22	22.22	22.8	21.7	19.0	29.7
UC-M15	15	23.81	25.40	24.4	22.0	19.8	29.9
UC-M16	16	23.81	25.40	24.5	22.0	19.8	30.0
UC-M18	18	26.98	30.16	24.5	22.0	21.3	31.5
UC-M20	20	30.16	31.75	26.2	22.1	23.9	24.2
UC-M22	22	30.16	31.75	26.2	22.1	23.9	34.2
UC-M25	25	34.92	38.10	31.1	26.1	26.2	38.3
UC-M28	28	41.27	47.63	41.1	38.8	27.7	49.8
UC-M30	30	44.45	47.50	41.1	38.8	28.6	50.7
UC-M32	32	46.04	50.80	40.9	38.6	32.8	54.7
UC-M38	38	38.10	55.56	49.9	45.1	37.8	64.9

**Installation Instruction**



1. Insert tube end into the cap to bottom on the shoulder of the cap.
2. Finger-tighten the nut
3. Wrench-tighten the nut 1-1/4 turns, holding the body with a backup wrench, or vice.

**Note**  
Tighten 1/8 turn for 1/16, 1/8, and 3/16 inch and 2, 3, and 4 mm Kor-Lok tube fittings.

Dimensions are for reference only and are subject to change without prior notice. E is minimum opening. F, G and L are typical finger tight.